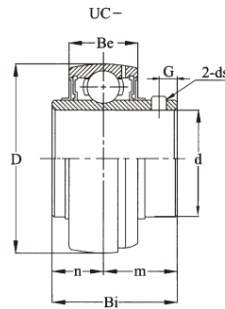


UC200 Series



select	Inquiry	Bearing No.	Shaft Dia		Boundary dimensions(mm)							Basic load ratings		Mass(Kg)
			in.	mm	D	Bi	Be	n	m	G	ds	C	Co	
UC201	-	12	47	31	16	12.7	18.3	5	M6x1.0	12890	6490	0.21		
UC201-8	1/2	-	47	31	16	12.7	18.3	5	1/4-28UNF	12890	6490	0.21		
UC202	-	15	47	31	16	12.7	18.3	5	M6x1.0	12890	6490	0.2		
UC202-10	5/8	-	47	31	16	12.7	18.3	5	1/4-28UNF	12890	6490	0.19		
UC203	-	17	47	31	16	12.7	18.3	5	M6x1.0	12890	6490	0.18		
UC204	-	20	47	31	16	12.7	18.3	5	M6x1.0	12890	6490	0.17		
UC204-12	3/4	-	47	31	16	12.7	18.3	5	1/4-28UNF	12890	6490	0.18		
UC205	-	25	52	34	17	14.3	19.7	5.5	M6x1.0	14000	7560	0.2		
UC205-14	7/8	-	52	34	17	14.3	19.7	5.5	1/4-28UNF	14000	7560	0.23		
UC205-15	15/16	-	52	34	17	14.3	19.7	5.5	1/4-28UNF	14000	7560	0.21		
UC205-16	1	-	52	34	17	14.3	19.7	5.5	1/4-28UNF	14000	7560	0.2		
UC206	-	30	62	38.1	19	15.9	22.2	6	M6x1.0	19510	11160	0.33		
UC206-17	1-1/16	-	62	38.1	19	15.9	22.2	6	1/4-28UNF	19510	11160	0.37		
UC206-18	1-1/8	-	62	38.1	19	15.9	22.2	6	1/4-28UNF	19510	11160	0.35		
UC206-19	1-3/16	-	62	38.1	19	15.9	22.2	6	1/4-28UNF	19510	11160	0.33		
UC206-20	1-1/4	-	62	38.1	19	15.9	22.2	6	1/4-28UNF	19510	11160	0.3		
UC207	-	35	72	42.9	20	17.5	25.4	6.5	M8x1.0	25640	15330	0.4		
UC207-20	1-1/4	-	72	42.9	20	17.5	25.4	6.5	5-16/24UNF	25640	15330	0.55		
UC207-21	1-5/16	-	72	42.9	20	17.5	25.4	6.5	5-16/24UNF	25640	15330	0.52		
UC207-22	1-3/8	-	72	42.9	20	17.5	25.4	6.5	5-16/24UNF	25640	15330	0.49		
UC207-23	1-7/16	-	72	42.9	20	17.5	25.4	6.5	5-16/24UNF	25640	15330	0.46		
UC208	-	40	80	49.2	21	19	30.2	8	M8x1.0	28890	17110	0.65		
UC208-24	1-1/2	-	80	49.2	21	19	30.2	8	5-16/24UNF	28890	17110	0.69		
UC208-25	1-9/16	-	80	49.2	21	19	30.2	8	5-16/24UNF	28890	17110	0.67		

UC200 Series

UC209	-	45	85	49.2	22	19	30.2	8	M8x1.0	32670	18220	0.7
UC209-26	1-5/8	-	85	49.2	22	19	30.2	8	5-16/24UNF	32670	18220	0.8
UC209-27	1-11/16	-	85	49.2	22	19	30.2	8	5-16/24UNF	32670	18220	0.76
UC209-28	1-3/4	-	85	49.2	22	19	30.2	8	5-16/24UNF	32670	18220	0.71
UC210	-	50	90	51.6	24	19	32.6	9	M10x1.25	35110	20840	0.8
UC210-30	1-7/8	-	90	51.6	24	19	32.6	9	3/8-24UNF	35110	20840	0.87